

Article ID: 909
DOI: 10.5586/asbp.909

Publication History
Received: 2021-05-25
Accepted: 2021-09-03
Published: 2021-10-08

Handling Editor
Edyta Gola; University of Wrocław, Poland;
<https://orcid.org/0000-0002-4111-6785>

Authors' Contributions
MPK: conceptualization; IC and MPK: plant tissue cultures and SEM analyses; GG: statistical analyses; all authors contributed to writing and editing




Funding
This work was funded by grant No. 2012/07/B/NZ9/01325 from the National Science Centre (Poland), and partially funded by statutory activity funds (K/ZDS/008057) of the Institute of Botany, Faculty of Biology, Jagiellonian University in Kraków.

Competing Interests
No competing interests have been declared.

Copyright Notice
© The Author(s) 2021. This is an open access article distributed under the terms of the [Creative Commons Attribution License](#), which permits redistribution, commercial and noncommercial, provided that the article is properly cited.

SHORT COMMUNICATION in STRUCTURE, EVOLUTION, AND DEVELOPMENT

Assessment of the Value of Stomatal Size and Density as Hallmarks of Nonaploid Kiwifruit Plants

Iwona Chłosta , Grzegorz Góralski ,
Marzena Popielarska-Konieczna *

Department of Plant Cytology and Embryology, Institute of Botany, Faculty of Biology, Jagiellonian University in Kraków, Gronostajowa 9, 30-387 Kraków, Poland

* To whom correspondence should be addressed. Email: m.popielarska-konieczna@uj.edu.pl

Abstract

In vitro-derived plants with elevated ploidy levels can display distinguishing features from the plants they are derived from, especially owing to their indirect regeneration. Genome size affects cell size and, thus, affects plant morphological characteristics. Therefore, stomata traits may be used as a diagnostic feature allowing identification of ploidy. *Actinidia chinensis* var. *deliciosa* A. Chev. (A. Chev.), known as kiwifruit, is successfully cultured in vitro and redifferentiated into plants via endosperm-derived calli. To identify differences between hexaploids obtained from seeds and confirmed nonaploids obtained from endosperm-derived calli, we analyzed the stomata. Our results confirmed that ploidy coincides with mean stomatal length, width, and density. Despite this correlation, this method cannot be used to distinguish individual hexaploid kiwifruit plants from nonaploid ones because samples with different ploidy yielded overlapping measurements.

Keywords

Actinidia chinensis var. *deliciosa*; callus; endosperm culture; hexaploids; regenerants; polyploidy; size of stomata; stomatal density

1. Introduction

Polyploidy occurs when cells possess more than two complete sets of chromosomes. This phenomenon plays an important role in plant speciation and evolution in nature and in agriculture (for improvement of popular crops and ornamental plants, such as *Allium cepa*, *Cucumis sativus*, *Petunia* sp., or *Vitis* sp.) (Touchell et al., 2020). Increased yield, large fruits, and enhanced vigor are some advantages of polyploid plants. Thus, distinguishing plants with various ploidy levels is crucial for plant research and breeding programs (Dirihan et al., 2013). It is also imperative to choose the best method for distinguishing ploidy, because not all established methods will be successful for a particular plant (Cramer, 1999). Genome size has a direct effect on the size of certain cell types (including trichomes and epidermal and stomatal cells). Consequently, genome size affects plant morphological features (Beaulieu et al., 2008). Stomata size and density are correlated with ploidy levels (Beaulieu et al., 2008; Wang et al., 2020). The aforementioned method has been useful for detection of plants with high ploidy, such as *Coffea* (Mishra, 1997), *Stevia* (Hata et al., 2001), *Pyrus* (Kadota & Niimi, 2002), *Citrus* (Padoan et al., 2013), and *Passiflora* (Antoniazzi et al., 2018).

Actinidia chinensis var. *deliciosa* A. Chev. (A. Chev.), known as kiwifruit, is a hexaploid plant (Huang, 2016) of great breeding importance for its fruit (Richardson et al., 2018). Its endosperm can be successfully cultivated in vitro and redifferentiated into plant (Góralski et al., 2005). Studies have thus been conducted on kiwifruit regenerants to confirm their ploidy (Chłosta et al., 2021; Góralski et al.,

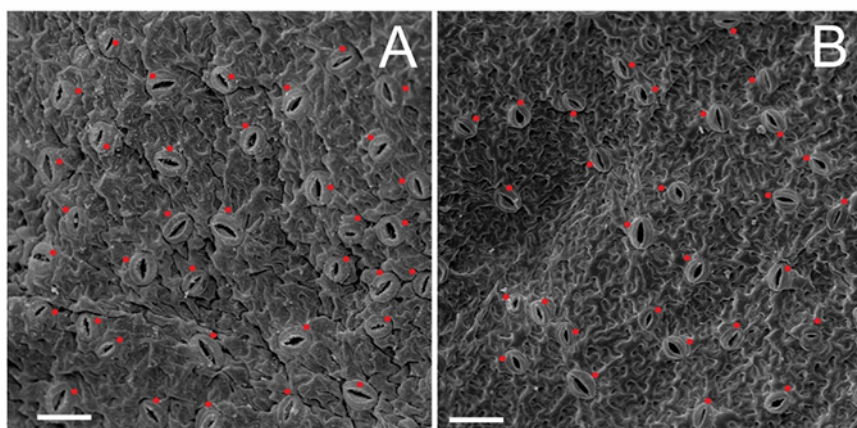


Figure 1 Electronograms of epidermal surfaces with stomata (red dots) from abaxial surfaces of *Actinidia chinensis* var. *deliciosa* leaves; (A) endosperm-derived nonaploid 9Cx, and (B) control hexaploid 6Cx. Scale bars = 100 μ m.

2005), but detailed analyses of the morphological differences between nonaploid regenerants and hexaploid plants have not been carried out yet. The aim of our study was to verify whether stomatal size is larger and density is smaller in nonaploid than in hexaploid kiwifruit leaves. We examined whether these features could be useful for distinguishing these two groups of plants.

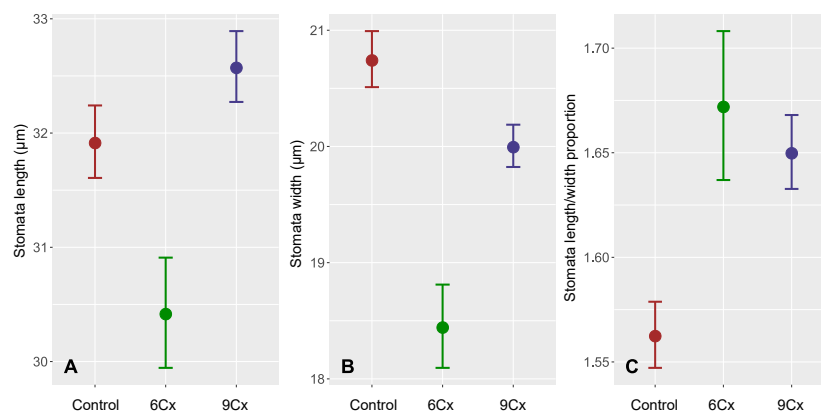
2. Material and Methods

For this study, we used materials obtained from commercially available fruit of *A. chinensis* var. *deliciosa* 'Hayward'. Endosperm tissue was isolated and maintained under conditions in the protocols described by Góralski et al. (2005) and Popielarska-Konieczna et al. (2011), respectively. Briefly, seeds were taken from the fruit after sterilization, the seed coats and embryos were removed, and the endosperms were transferred onto basal Murashige and Skoog (1962) medium (Duchefa) supplemented with 0.5 mg/L thidiazuron (Sigma). For controls, plants were obtained from seeds grown under the conditions described by Popielarska-Konieczna et al. (2011). Each callus line obtained from a particular endosperm explant was individually numbered. Similarly, each regenerant from a specified callus line was distinguished as previously described by Chłosta et al. (2021). The abbreviations 6Cx and 9Cx were used for hexaploid (2C DNA content) and nonaploid plants (derived from endosperm cells with 3C DNA content), respectively. Regenerants and control plants had ploidy predetermined by flow cytometry, according to Chłosta et al. (2021).

Twelve endosperm-derived regenerants (ten with 9Cx and two with 6Cx DNA) and nine 6Cx control plants were selected for stomatal feature measurements (Table 1). The selected acclimatized plants [maintained under the conditions described by Chłosta et al. (2021)] had five to seven fully expanded leaves. The third or fourth expanded leaf from the top of each plant were simultaneously harvested for analyses. Samples were prepared according to previously established protocols (Popielarska-Konieczna et al., 2011). Briefly, leaves were immediately prefixed in 5% buffered glutaraldehyde (0.1 M phosphate buffer, pH 7.2) for 2 hr at room temperature. After dehydration through a graded ethanol series, samples were dried with a CPD system (CO₂ critical-point drying), sputter-coated with gold (JEOL JFC-1100 E ion sputtering system), and observed using a scanning electron microscope (JEOL JSM 5410). The abaxial region close to the midrib in the middle of the leaf was observed (Figure 1A,B). Photographs were processed using Corel Photo-Paint X7 software. Number of stomata was determined in three areas, comprising 0.2 mm² per leaf, and was reported in units of stomata per 1 mm². One hundred measurements of open stomata (measured as a complex of two guard

Table 1 Plants of *Actinidia chinensis* var. *deliciosa* chosen for analysis of stomatal traits; seedlings (6Cx control) and regenerated plants (6Cx and 9Cx).

Group of samples	Plants ID
6Cx control	K1, K2, K4, K5, K6, K7, K12, K13, K14
6Cx	4E, 4H
9Cx	1C, 3A, 3D, 4B, 4K, 4L, 7B, 8B, 10A, 11B

**Figure 2** Mean length (A), width (B), and ratio of length to width (C) of the stomata in *Actinidia chinensis* var. *deliciosa* seedlings (6Cx control) and endosperm-derived plants (6Cx and 9Cx regenerants); error bars show 95% confidence intervals.

cells and a pore) width and length per specimen were taken using ImageJ 1.48 software.

Statistical analyses were performed using R software (R Core Team, 2018).

Three groups of samples (Table 1) were compared for number of stomata per 1 mm², and stomata length, width, and length/width. Equality of variances between groups was tested using Levene's test of equality of variance [leveneTest() function]. Because variances were not homogenous ($p < 0.05$) in all cases, Welch's heteroscedastic F test (Welch test) was applied. The ggplot2 package (Wickham, 2016) was used to generate Figure 2–Figure 4.

3. Results and Discussion

Preliminary studies (Popielarska-Konieczna & Kleszcz, 2015) suggest visible differences in the size and density of stomata between control plants and regenerants with 6Cx DNA content and those with 9Cx content. Here, all three groups of samples (control 6Cx, 6Cx regenerants, and 9Cx) were significantly different in terms of both the length and width of the stomata calculated for all measurements of length and width for a group (Figure 2A,B, Table S1). Significant differences in guard cell size have been reported for other kiwifruit polyploids (Boase & Hopping, 1995; Przywara et al., 1988). In the present study, the stomata of 9Cx plants were generally longer than those of the control and 6Cx regenerants, but the stomata in the control plants were wider. Means for stomatal dimensions differed significantly between samples, even within the same group of tested plants (Figure 3). Although the means for two samples within a group may differ significantly, those for samples from different groups were in many cases almost the same, and the differences were insignificant (Figure 3B). Spreads between the minimal and maximal values for stomatal measurements overlapped for all samples. Mean stomata length and width proportions (Figure 2C) were the lowest for the control plants and significantly differed from those of the other two groups, which did not significantly differ from each other.

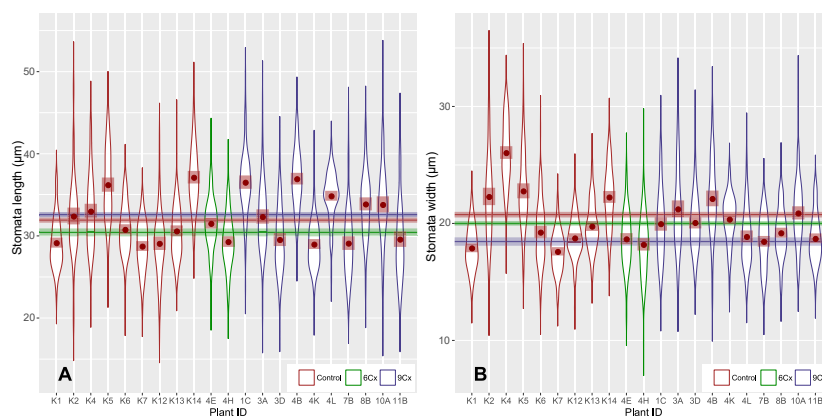


Figure 3 Stomatal length (A) and width (B) in seedlings (6Cx control) and endosperm-derived plants (6Cx and 9Cx regenerants). Graphs show the patterns of distribution of measurements of all analyzed individuals. Horizontal lines accompanied by semitransparent bands in appropriate colors show mean values and 95% confidence intervals (CI) for the measurement sets. Brown dots show the mean values for a given dataset, with 95% confidence intervals marked as semitransparent brown squares.

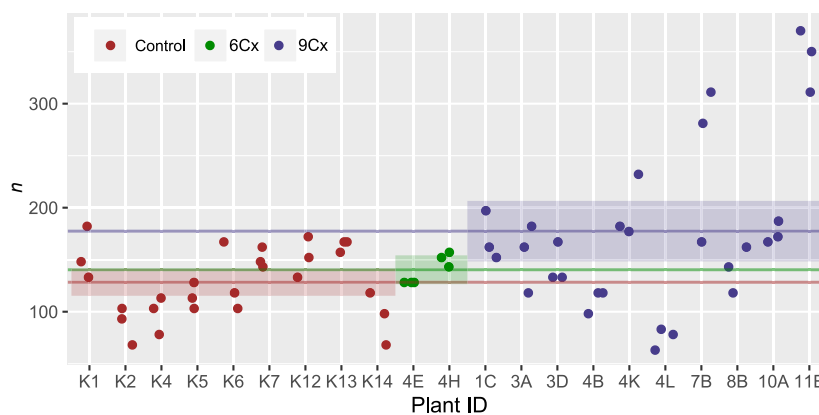


Figure 4 Stomatal density in seedlings (6Cx control) and endosperm-derived plants (6Cx and 9Cx regenerants). n = number of stomata per mm^2 ; horizontal lines accompanied by semitransparent bands in appropriate colors show mean values and 95% confidence intervals for the measurement sets.

Very small significant differences in stomatal size have been reported for *Citrus clementina* (Padoan et al., 2013), and the authors suggest that this method could be useful for determining ploidy. Although positive correlations were observed between ploidy and stomatal guard cell length, the overlap of values between groups was too large to permit reliable identifications. By contrast, data from *Morus alba* (Thomas et al., 2000) and *Passiflora edulis* (Antoniazzi et al., 2018) permit the use of stomatal cell size to distinguish triploid plants from diploid parents. Our data, combined with the above studies, support the conclusion that although ploidy may coincide with stomata dimensions, the usefulness of measuring stomatal size to determine ploidy is species dependent.

Another frequently proposed method for estimating ploidy is to calculate stomata density. Our three-group analysis (Figure 4, Table S1) revealed that differences in the means were only significant between 6Cx control and 9Cx regenerant groups. The spread in values was very high, especially for 9Cx regenerants. Although stomatal densities measured within a group may vary significantly, they can be similar for samples from different groups (Figure 4). These results disagree with the results of previous studies showing an increase in stomatal length concurrent with an

increase in ploidy and a decrease in stomatal density (Antoniazzi et al., 2018; Padoan et al., 2013).

4. Limitations of the Study

The results presented indicate some potential correlations, which must be confirmed among larger groups of control plants, 9Cx regenerants, and especially 6Cx regenerants. In the present study, the limited number of hexaploid regenerants did not allow us to consider the possibility of distinguishing 6Cx control plants and 6Cx regenerants.

5. Conclusions

Our results suggest a correlation between ploidy and stomatal dimension means and stomatal densities calculated for numerous individuals. In particular, the means of stomatal length and density were higher for nonaploid regenerants. However, the method cannot reliably distinguish individual hexaploid and nonaploid plants owing to significant variation in these values within study groups. Although generally, the mean stomatal length for nonaploids is higher than that for hexaploids, when values for individuals are compared, they may be similar or hexaploid stomata may in some cases be longer than nonaploid ones.

6. Supplementary Material

The following supplementary material is available for this article:

Table S1. Stomatal traits of seedlings (6Cx control) and regenerated plants (6Cx and 9Cx) of *Actinidia chinensis* var. *deliciosa*.

References

- Antoniazzi, C. A., Faria, R. B., de Carvalho, P. P., Mikovski, A. I., de Carvalho, I. F., de Matos, E. M., Reis, A. C., Viccini, L. F., Pinto, D. P. P., Rocha, D. I., Otoni, W. C., & da Silva, M. L. (2018). In vitro regeneration of triploid plants from mature endosperm culture of commercial passionfruit (*Passiflora edulis* Sims). *Scientia Horticulturae*, 238, 408–425. <https://doi.org/10.1016/j.scienta.2018.05.001>
- Beaulieu, J. M., Leitch, I. J., Patel, S., Pendharkar, A., & Knight, C. A. (2008). Genome size is a strong predictor of cell size and stomatal density in angiosperms. *New Phytologist*, 179, 975–986. <https://doi.org/10.1111/j.1469-8137.2008.02528.x>
- Boase, M. R., & Hopping, M. E. (1995). DNA dodecaploid plants detected among somaclonal of *Actinidia deliciosa* var. *deliciosa* cv. Hayward. *Plant Cell Reports*, 14, 319–323. <https://doi.org/10.1007/BF00232036>
- Chłosta, I., Kwolek, D., Sliwiska, E., Góralski, G., & Popielarska-Konieczna, M. (1921). Sex-linked molecular markers identify female lines in endosperm-derived kiwifruit callus and in regenerants. *Plants*, 10, Article 526. <https://doi.org/10.3390/plants10030526>
- Cramer, C. S. (1999). Laboratory techniques for determining ploidy in plants. *HortTechnology*, 9(4), 594–596. <https://doi.org/10.21273/HORTTECH.9.4.594>
- Dirihan, S., Terho, P., Helander, M., & Saikkonen, K. (2013). Efficient analysis of ploidy levels in plant evolutionary ecology. *Caryologia*, 66(3), 251–256. <https://doi.org/10.1080/00087114.2013.849414>
- Góralski, G., Popielarska, M., Ślesak, H., Siwińska, D., & Batycka, M. (2005). Organogenesis in endosperm of *Actinidia deliciosa* cv. Hayward cultured in vitro. *Acta Biologica Cracoviensia, Series Botanica*, 47, 121–128.
- Hata, S., Yomo, T., & Fujita, S. (2001). Breeding of triploid plants of stevia (*Stevia rebaudiana* BERTONI) with high rebaudioside A content. *Japanese Journal of Tropical Agriculture*, 45, 281–289. <https://doi.org/10.11248/jsta1957.45.281>
- Huang, H. (2016). Introduction. In H. Huang (Ed.), *Kiwifruit: The genus Actinidia* (pp. 1–7). Academic Press. <https://doi.org/10.1016/B978-0-12-803066-0.09999-8>
- Kadota, M., & Niimi, Y. (2002). In vitro induction of tetraploid plants from a diploid Japanese pear cultivar (*Pyrus pyrifolia* N. cv. Hosui). *Plant Cell Reports*, 21, 282–286. <https://doi.org/10.1007/s00299-002-0509-1>
- Mishra, M. K. (1997). Stomatal characteristics at different ploidy levels in *Coffea* L. *Annals of Botany*, 80, 689–692. <https://doi.org/10.1006/anbo.1997.0491>

- Murashige, T., & Skoog, F. (1962). A revised medium for rapid growth and bioassay with tobacco tissue cultures. *Physiologia Plantarum*, 15, 473–497. <https://doi.org/10.1111/j.1399-3054.1962.tb08052.x>
- Padoan, D., Mossad, A., Chiancone, B., Germana, M. A., & Khan, P. S. S. V. (2013). Ploidy levels in *Citrus clementine* affects leaf morphology, stomatal density and water content. *Theoretical and Experimental Plant Physiology*, 25, 283–290. <https://doi.org/10.1590/S2197-00252013000400006>
- Popielarska-Konieczna, M., & Kleszcz, I. (2015). Preliminary studies on plants regenerated from endosperm-derived callus of kiwifruit (*Actinidia deliciosa* var. *deliciosa*). *Modern Phytomorphology*, 7, 55–57. <https://doi.org/10.5281/zenodo.160362>
- Popielarska-Konieczna, M., Kozieradzka-Kiszkurno, M., & Bohdanowicz, J. (2011). Cutin plays a role in differentiation of endosperm-derived callus in kiwifruit. *Plant Cell Reports*, 30, 2143–2152. <https://doi.org/10.1007/s00299-011-1120-0>
- Przywara, L., Pandey, K. K., & Sanders, P. M. (1988). Length of stomata as an indicator of ploidy level in *Actinidia deliciosa*. *New Zealand Journal of Botany*, 26, 179–182. <https://doi.org/10.1080/0028825X.1988.10410110>
- R Core Team. (2018). *R: A language and environment for statistical computing* [Computer software]. R Foundation for Statistical Computing. <https://www.R-project.org/>
- Richardson, D. P., Ansell, J., & Drummond, L. N. (2018). The nutritional and health attributes of kiwifruit: A review. *European Journal of Nutrition*, 57, 2659–2676. <https://doi.org/10.1007/s00394-018-1627-z>
- Thomas, T. D., Bhatnagar, A. K., & Bhojwani, S. S. (2000). Production of triploid plants of mulberry (*Morus alba* L.) by endosperm culture. *Plant Cell Reports*, 19, 395–399. <https://doi.org/10.1007/s002990050746>
- Touchell, D. H., Palmer, I. E., & Ranney, T. G. (2020). In vitro ploidy manipulation for crop improvement. *Frontiers in Plant Science*, 11, Article 722. <https://doi.org/10.3389/fpls.2020.00722>
- Wang, P., Mu, X., Gao, Y. G., Zhang, J., & Du, J. (2020). Successful induction and the systematic characterization of tetraploids in *Cerasus humilis* for subsequent breeding. *Scientia Horticulturae*, 265, Article 109216. <https://doi.org/10.1016/j.scienta.2020.109216>
- Wickham, H. (2016). *ggplot2: Elegant graphics for data analysis*. Springer International Publishing. <https://doi.org/10.1007/978-3-319-24277-4>